

OFFICE DESIGN IDEAS BOOK FOR:

- EXECUTIVE OFFICE SUITES
- OFFICE SUITES
- CONFERENCE ROOM
- CUBICLES
- WORKSTATIONS

COMPUINJMP

4,050 SQ. FT.
JANESVILLE, WI



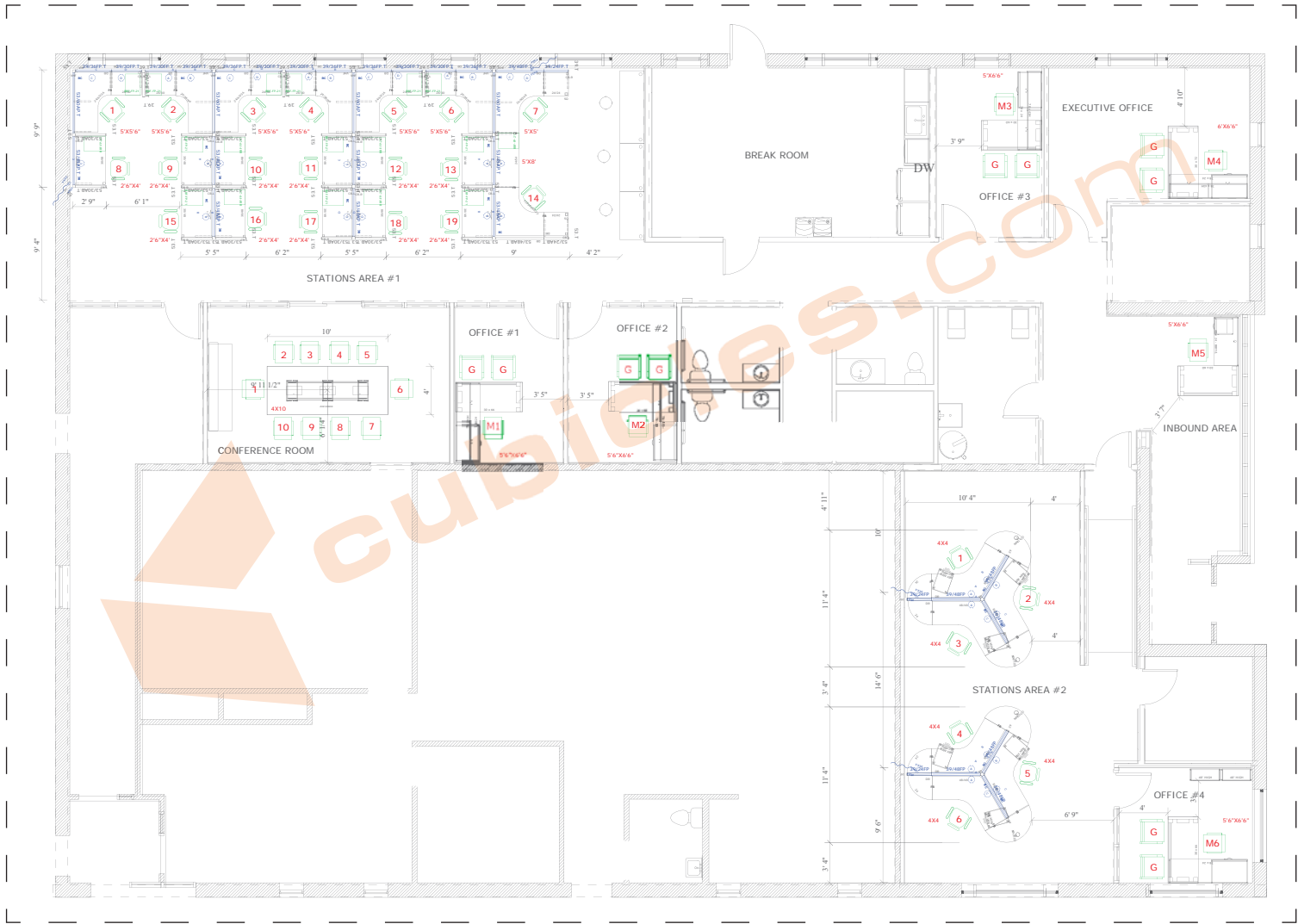
cubicles.com

we're so much more than cubicles

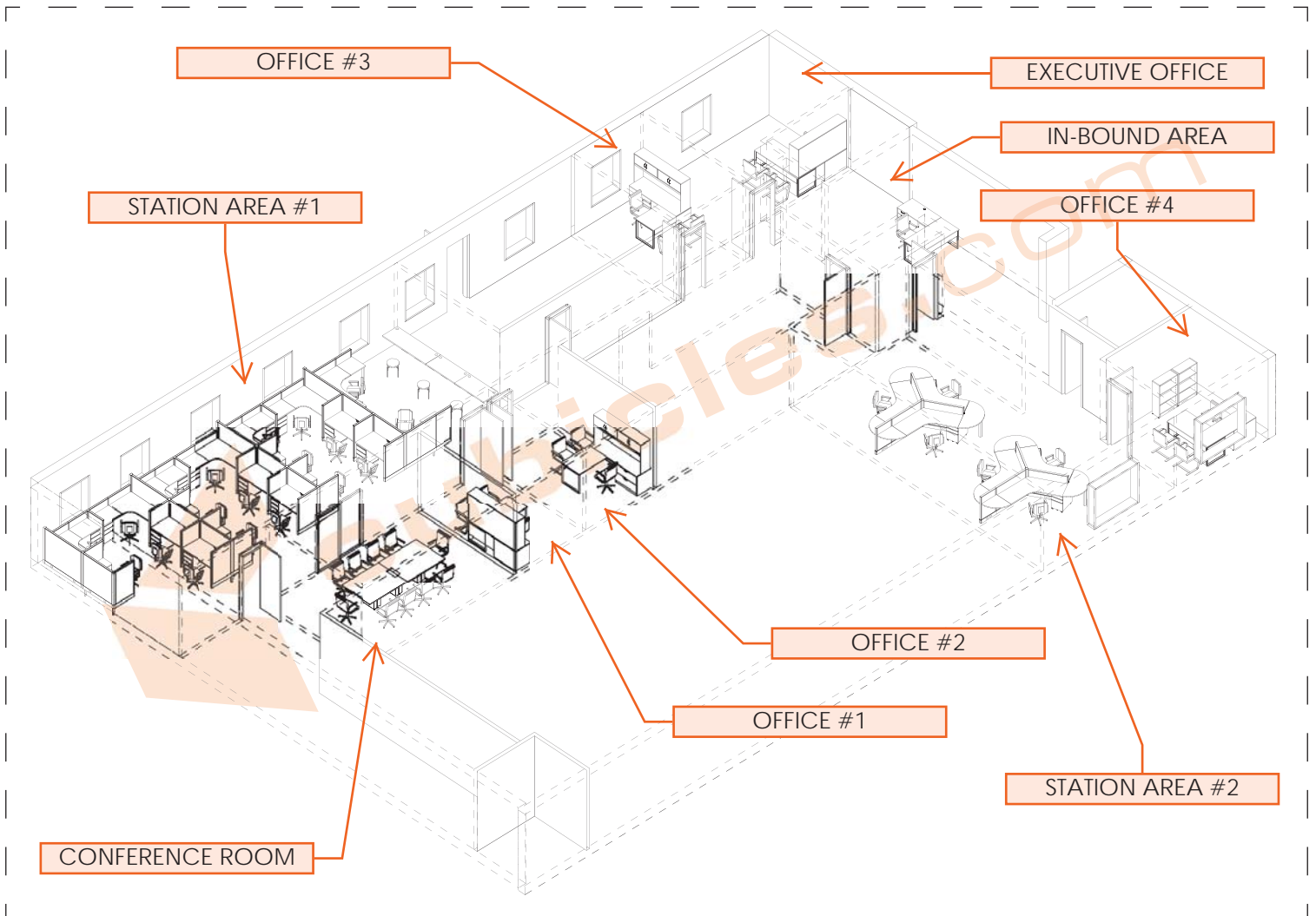
☎ 888-442-8242



2D OVERALL



3D OVERALL

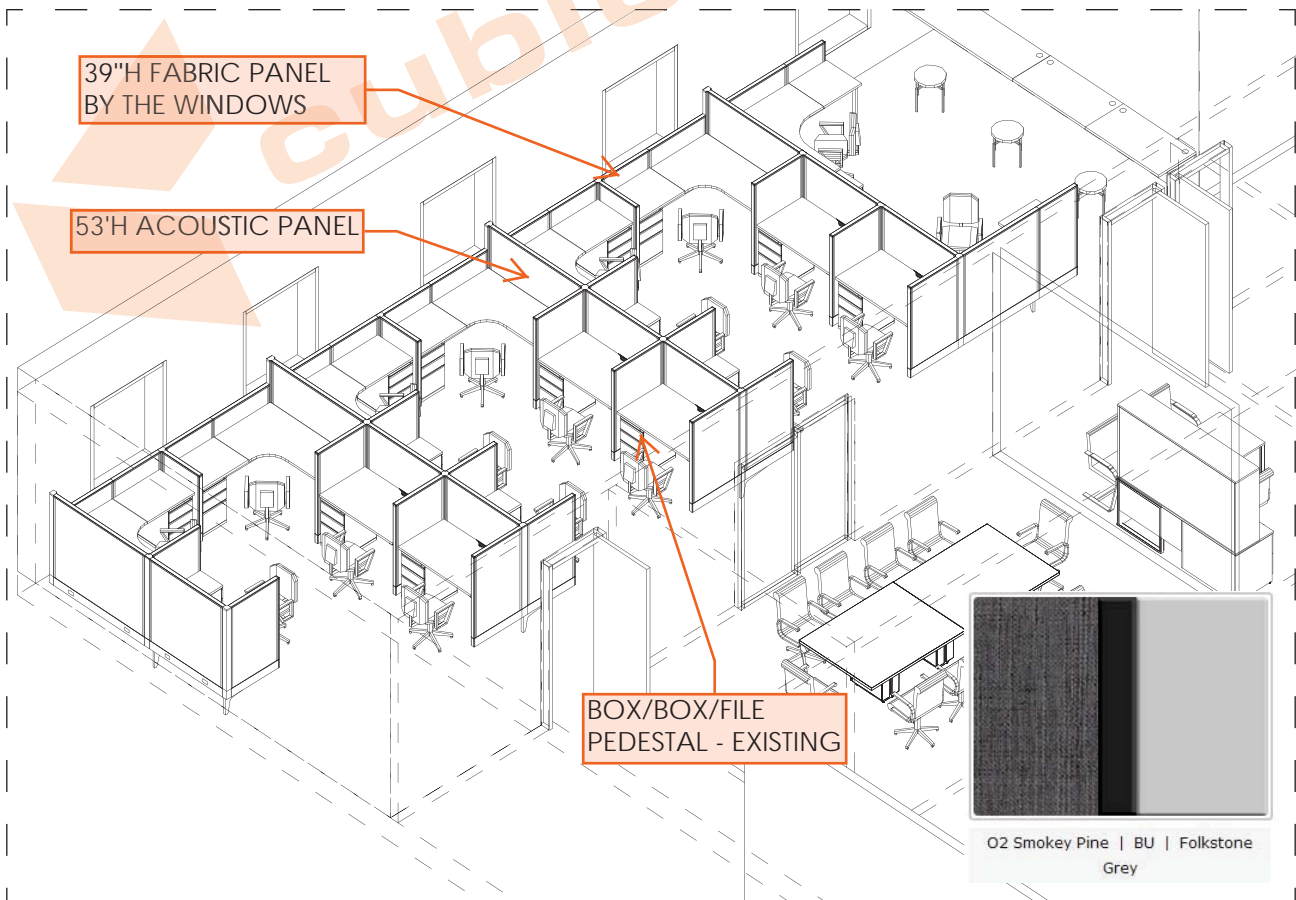
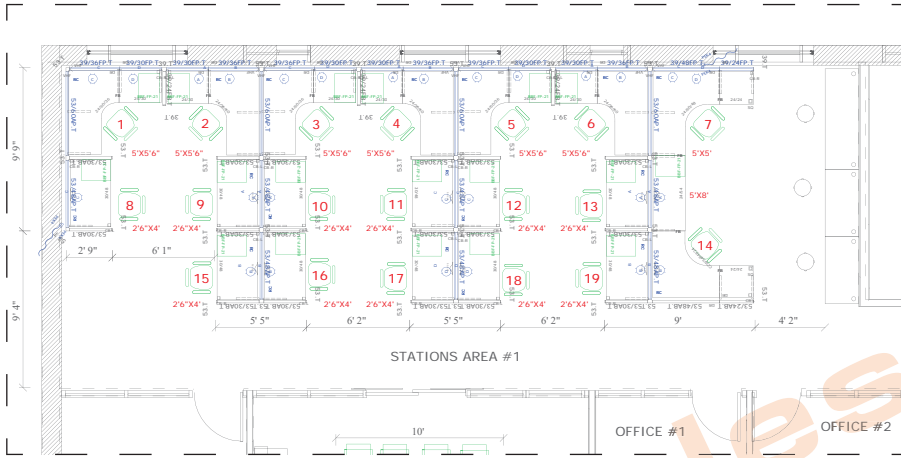


WORKSTATION AREA #1

SPO-BUDGET CORPORATE OFFICE FURNITURE

- (1) 2'6"X4'X53"H POWERED CUBICLES WITH EXISTING BOX/BOX/FILE PEDESTAL
- (6) 5'X5'6"X39"/53"H POWERED CUBICLES WITH EXISTING BOX/BOX/FILE PEDESTAL
- (1) 5'X8'X53"H POWERED CUBICLE WITH EXISTING BOX/BOX/FILE PEDESTAL
- (1) 5'X5'X39"/53"H POWERED CUBICLE

WORKSTATION FINISHES:
FABRIC: SPO SMOKEY PINE
PAINT&TRIM: BU
WORKSURFACE & EDGE: FOLKSTONE GREY



CONFERENCE ROOM

LBG - LAMINATE CONFERENCE TABLE 29"H

(1) 4'X10' CONFERENCE TABLE

*TABLE HAS ONE ACCESS DOOR FOR POWER

(1) POWER BOX - (2) POWER OUTLETS | (1) HDMI | (1) DATA



Asian Night
(ASN)

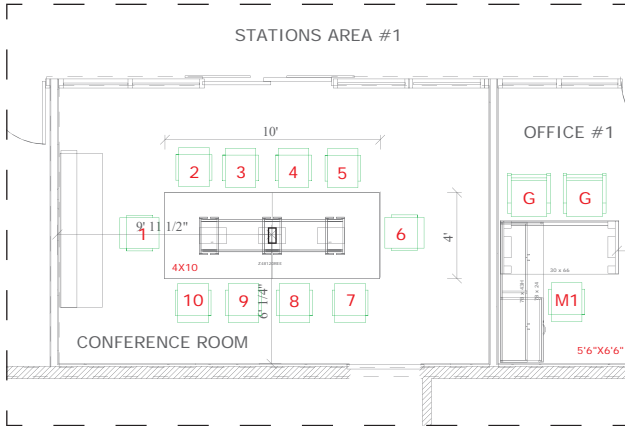
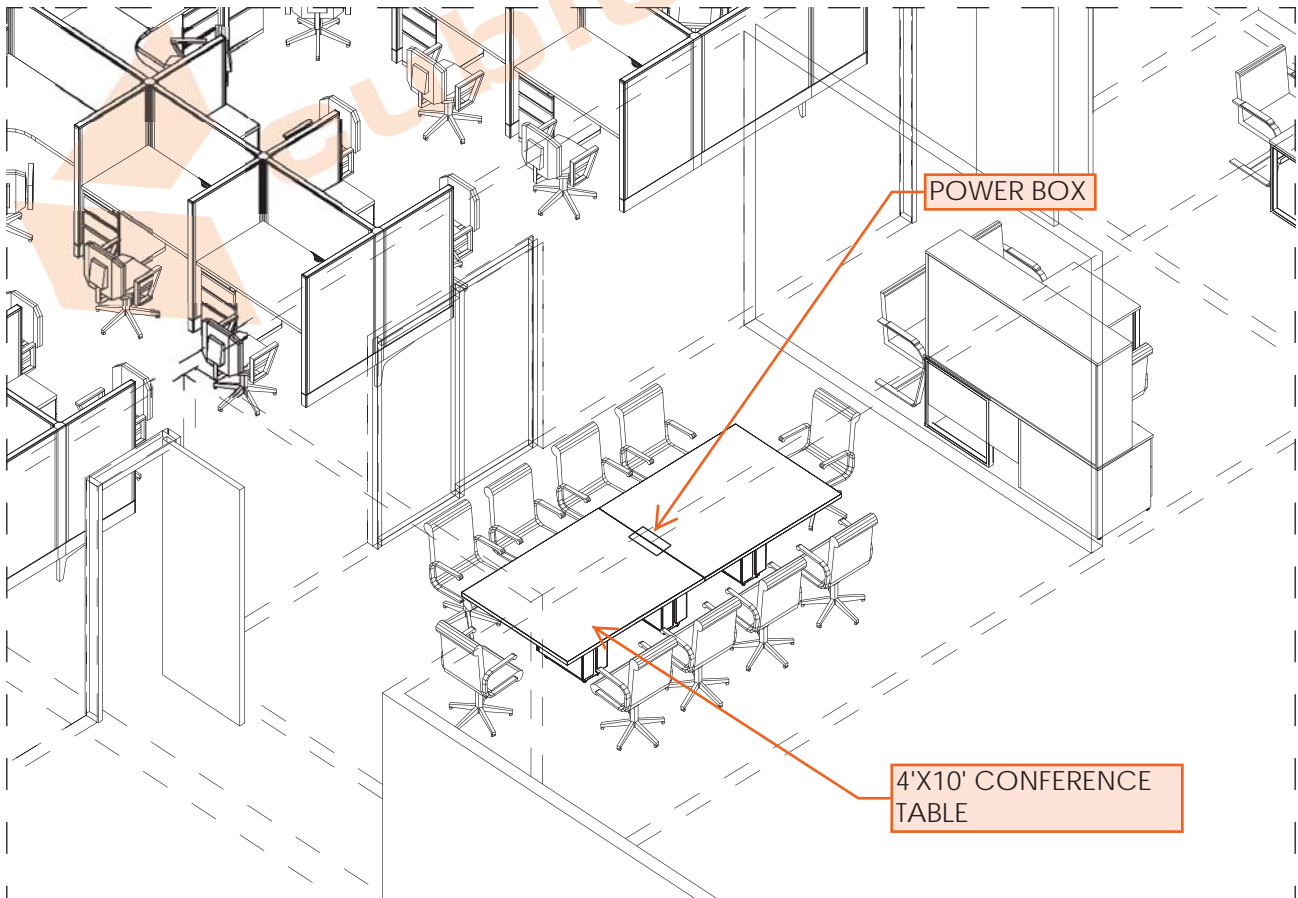


TABLE FINISHES:
 LAMINATE: ASIAN NIGHT
 BASE ACCENT: BRUSHED COBALT
 POWER BOX: SILVER



OFFICE #1, #2, #3 | EXECUTIVE OFFICE

FOI - LAMINATE DESK

(2) 5'6"X6'6" L-SHAPE DESK WITH MODESTY PANEL, BOX/BOX/FILE STORAGE, FILE/FILE STORAGE AND HUTCH (OFFICE #1 & #2)

(1) 5'X6'6" L-SHAPE DESK WITH MODESTY PANEL, BOX/BOX/FILE STORAGE, FILE/FILE STORAGE AND HUTCH (OFFICE #3)

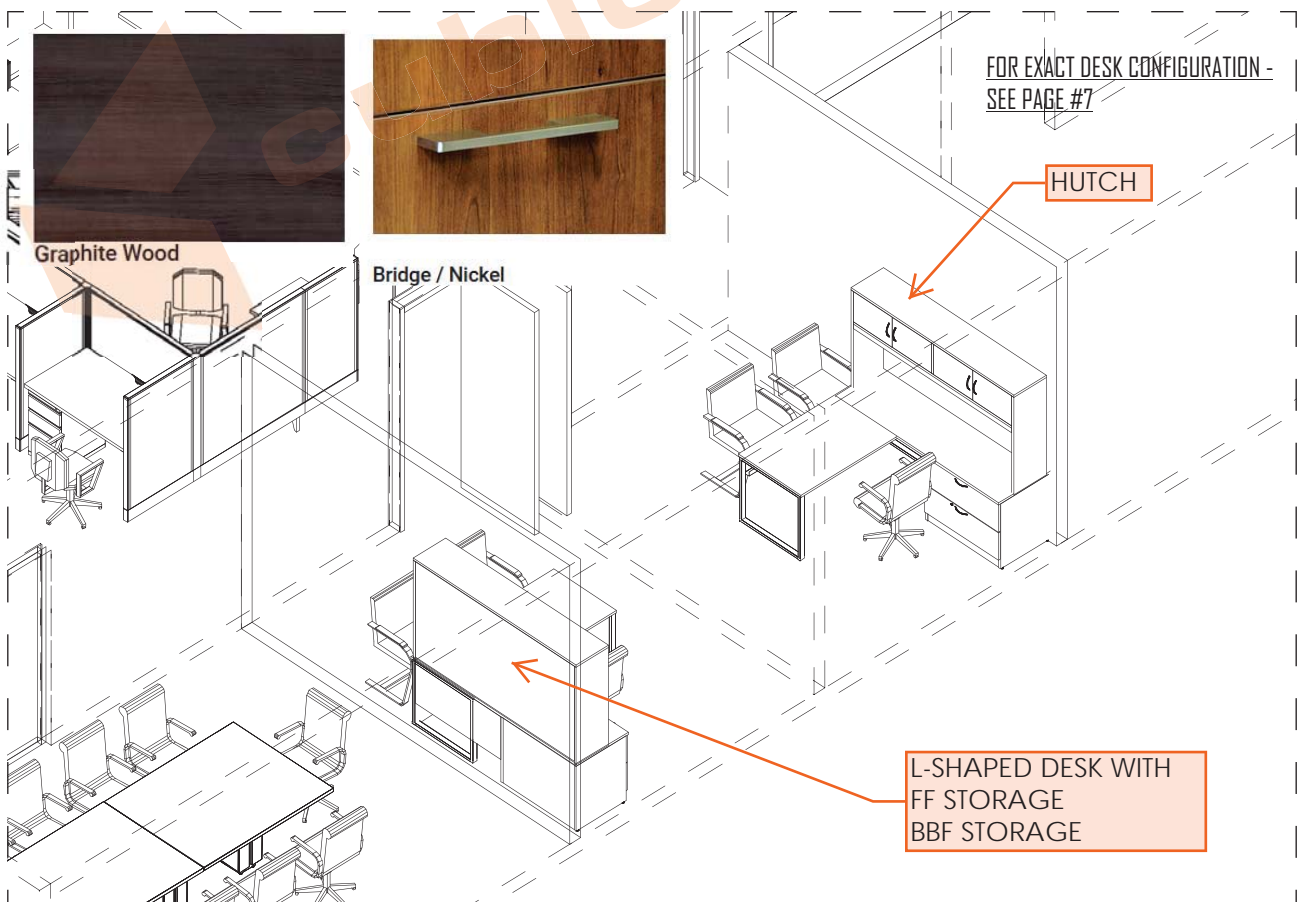
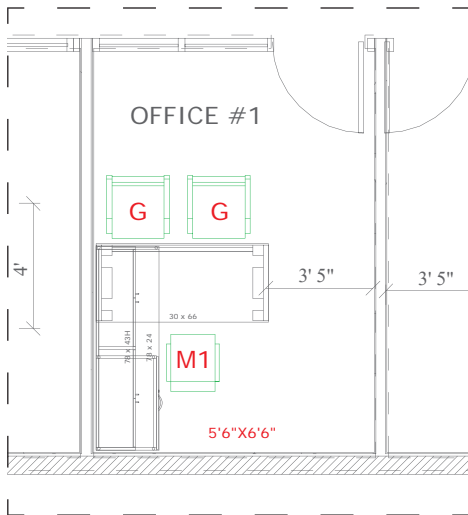
(1) 6'X6'6" L-SHAPE DESK WITH MODESTY PANEL, BOX/BOX/FILE STORAGE, FILE/FILE STORAGE AND HUTCH (EXECUTIVE OFFICE)

DESK FINISHES:

LAMINATE: GRAPHITE WOOD

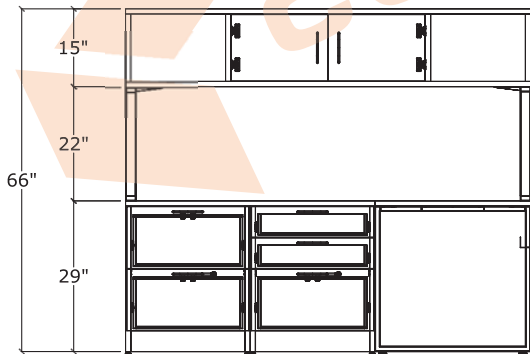
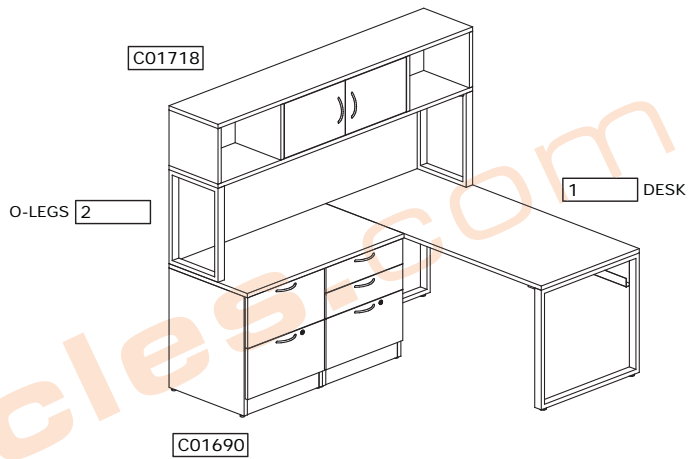
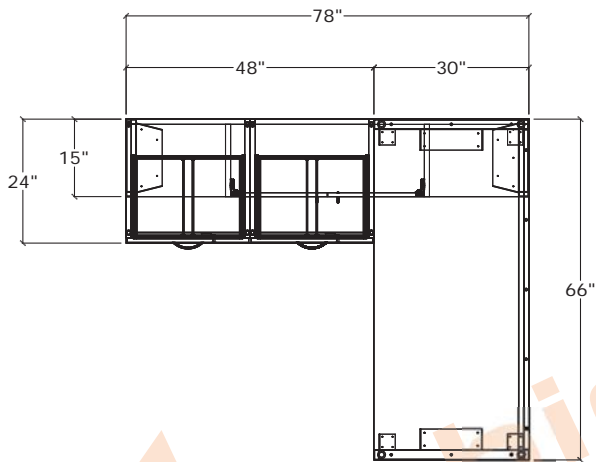
LEGS: NICKEL

HANDLES: NICKEL

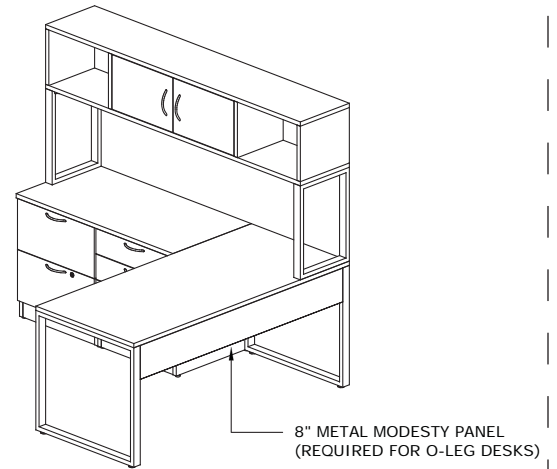


OFFICE #1, #2, #3 | EXECUTIVE OFFICE - DESK DRAWINGS

66"W (WITH LEFT RETURN) - QTY 1



C01690



8" METAL MODESTY PANEL
(REQUIRED FOR O-LEG DESKS)

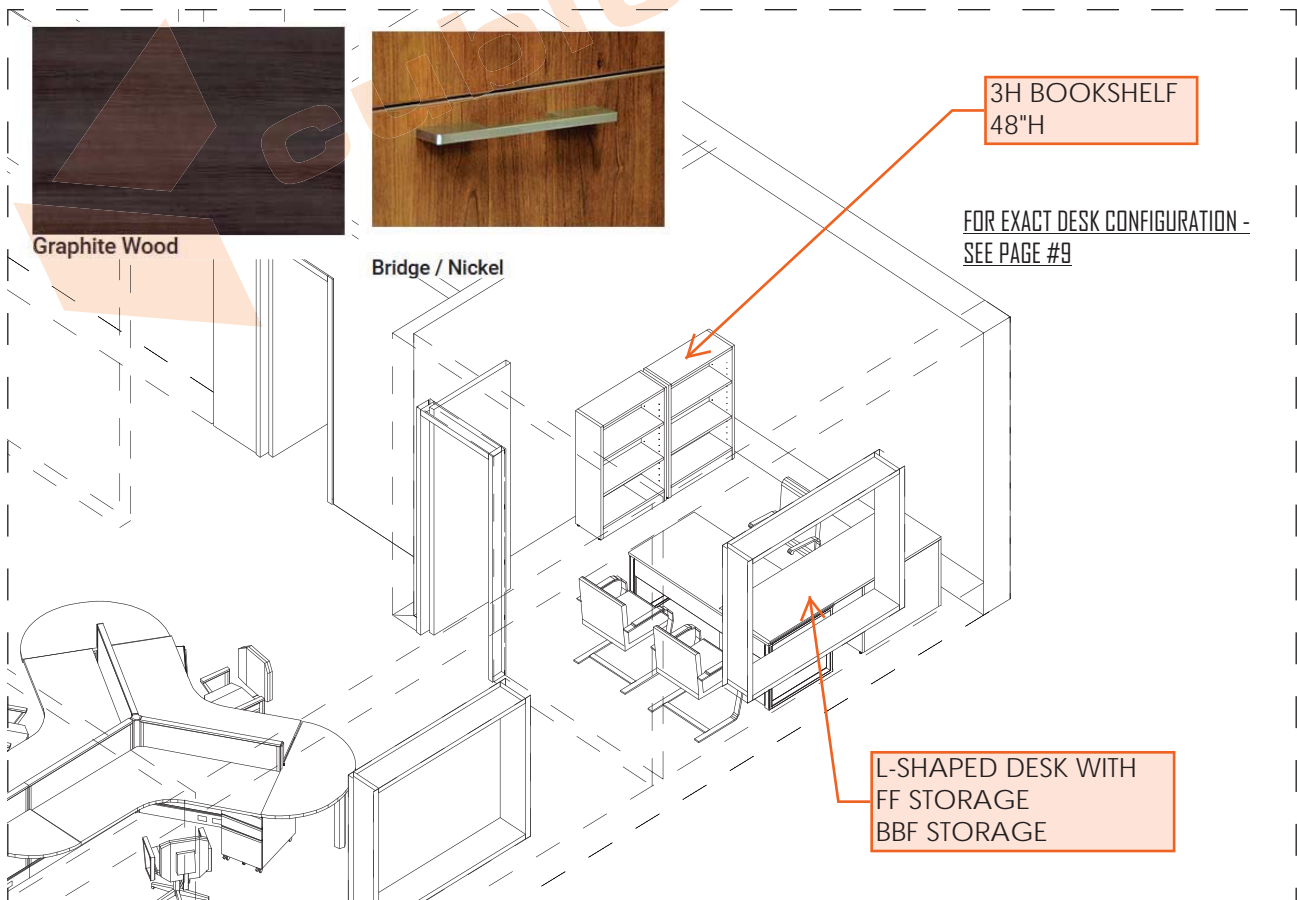
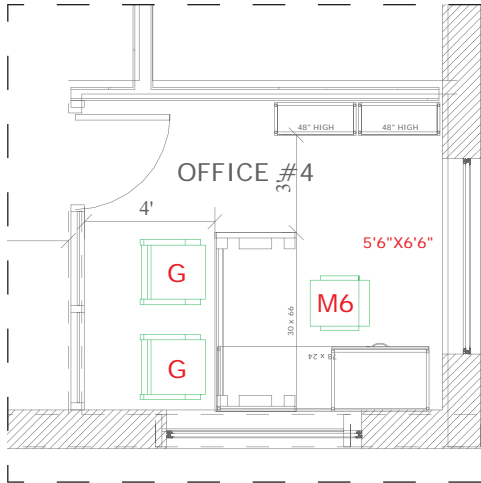
OFFICE #4

FBI - LAMINATE DESK

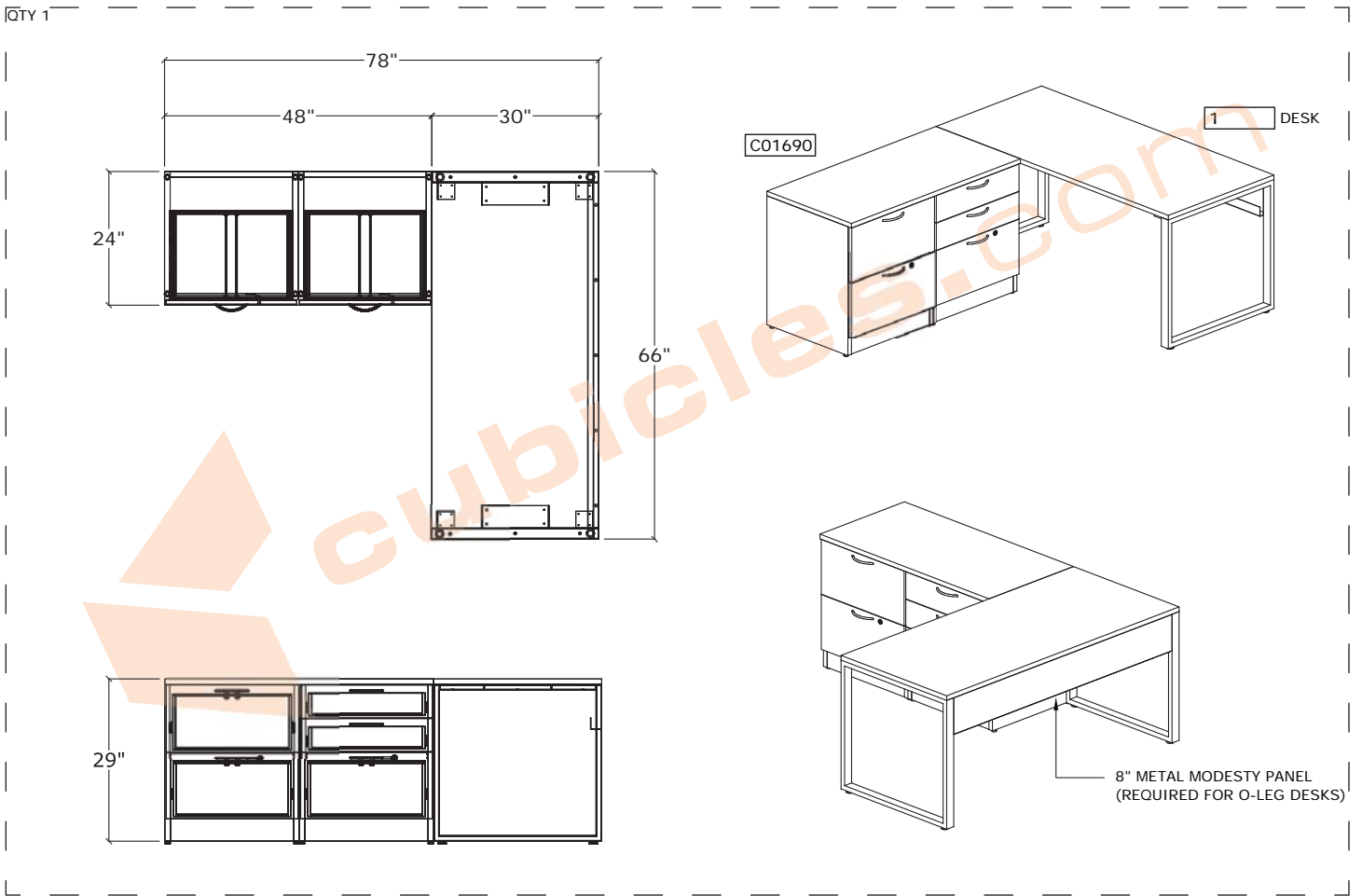
[1] 5'6"X6'6" L-SHAPE DESK WITH MODESTLY PANEL, BOX/BOX/FILE STORAGE, FILE/FILE STORAGE AND [2] 3H BOOKCASES 48" H



DESK FINISHES:
LAMINATE: GRAPHITE WOOD
LEGS: NICKEL
HANDLES: NICKEL



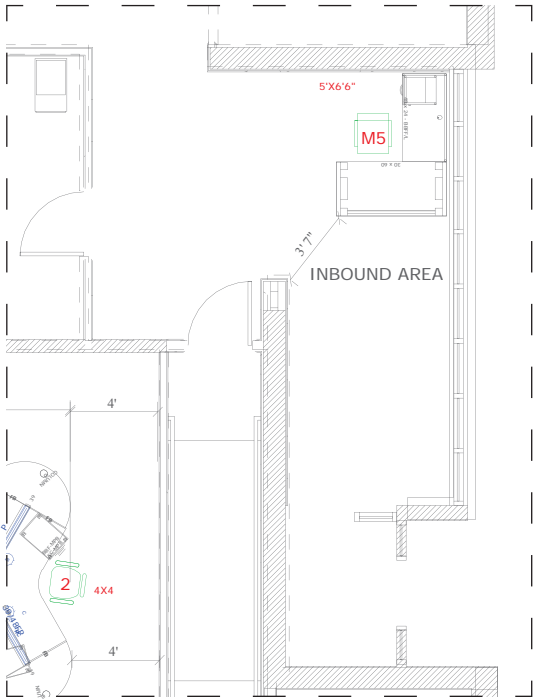
OFFICE #4 - DESK DRAWINGS



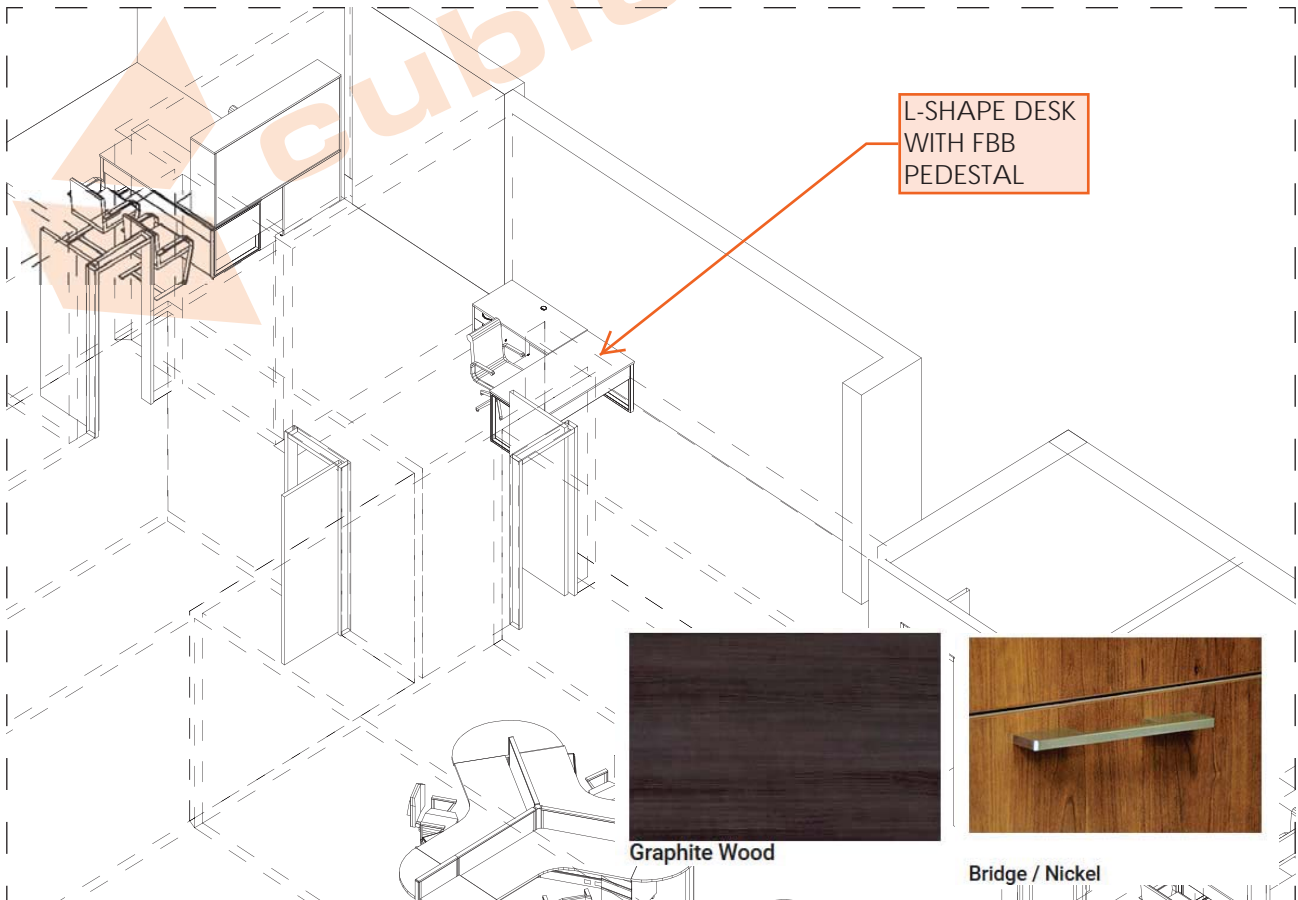
IN-BOUND AREA

FDI - LAMINATE DESK

(1) 5'X6'6" L-SHAPE DESK WITH BOX/BOX/FILE PEDESTAL



DESK FINISHES:
LAMINATE: GRAPHITE WOOD
LEGS: NICKEL
HANDLES: NICKEL



WORKSTATION AREA #1

SPO-BUDGET CORPORATE OFFICE FURNITURE

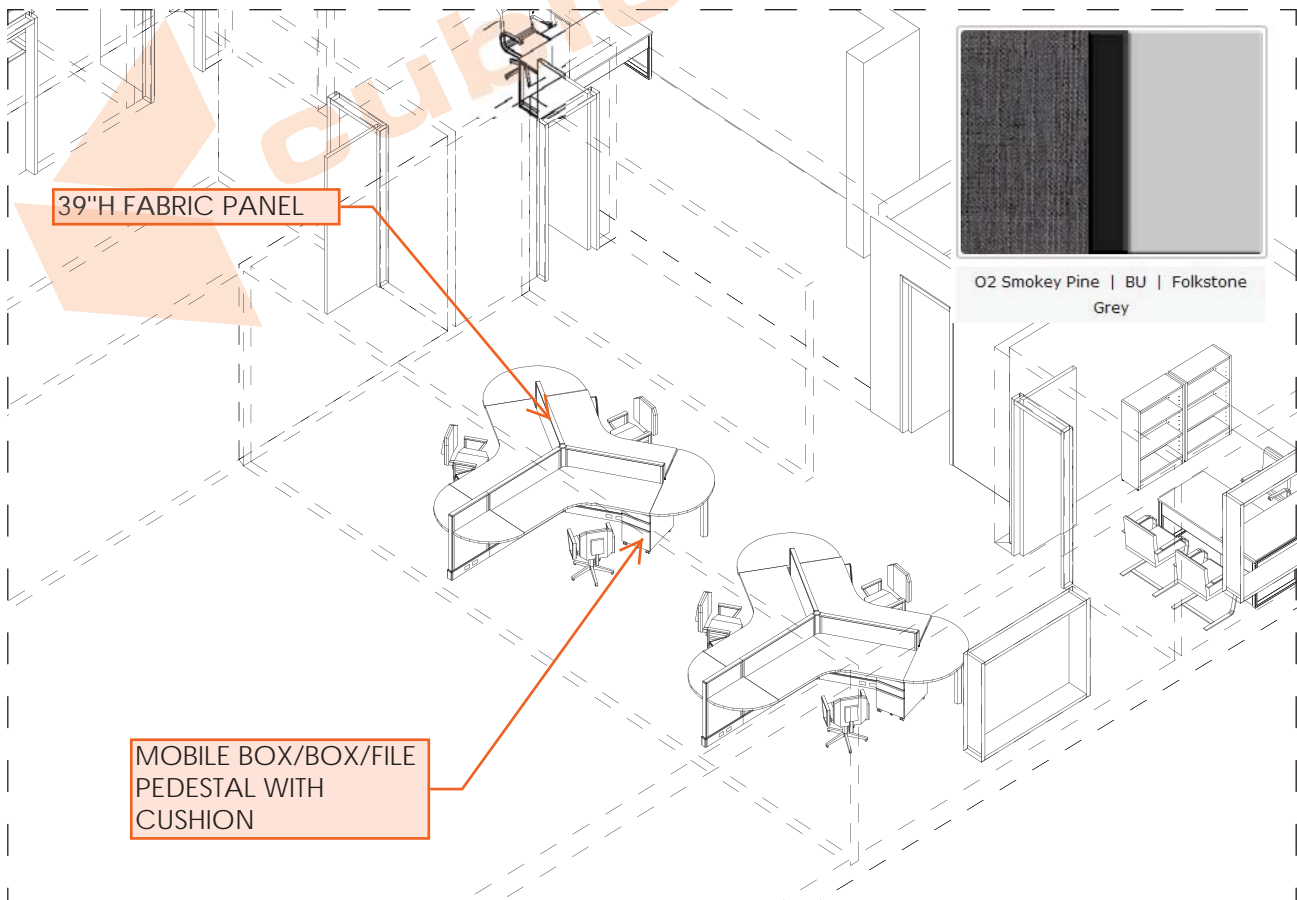
[6] 4'X4'X39" H POWERED CUBICLES WITH MOBILE BOX/BOX/FILE PEDESTAL WITH CUSHION

WORKSTATION FINISHES:

FABRIC: O2 SMOKEY PINE

PAINT&TRIM: BU

WORKSURFACE&EDGE: FOLKSTONE GREY



O2 Smokey Pine | BU | Folkstone Grey

CUBICLES.COM is a nationwide leader in the world of office furniture and furniture services. We've spent the last 20+ years building and maintaining a vast network of manufacturers, designers, contractors and facilities allowing us to cater to the commercial office, the home office, and everything in between.



CONTRACT OFFICE FURNISHINGS

Our full-service agency provides a dedicated hands-on team of professional designers, specifiers and project managers to deliver your commercial office project from a conceptual dream to a "ready to move in" reality. We are committed to providing every client with quality products, fair pricing, and efficient service.

PRODUCTS INCLUDE:

Cubicles * Desks * Tables * Reception * Conference * Seating * Filing & Storage * Lounge * Breakroom * Sit Stand
Acoustic Tiles * Modular Walls * Glass Walls * Office Carpeting * Home Living * And more!

SERVICES INCLUDE:

Sales & Rentals (New & Used) * Space Planning & Design * Budgeting & Financing * Project Management
Installation & Logistics * Moving & Warehousing * Inventory Management

WE PROUDLY SERVE:

Corporate * Residential * Government/GSA * Healthcare * Education

WE SERVE ALL AGENCIES, ALL ACROSS AMERICA



Honeywell



SIEMENS



REFERENCES AVAILABLE UPON REQUEST ★★★★★ see more at cubicles.com/reviews