



About Fuse

Fuse, a modular furniture series in cherry or maple, advances planning versatility and aesthetic possibilities with optimal wire management for workspaces and conferencing.

The Fuse design projects a built-in cabinetry look, while adding features that support the devices and cabling essential to information networks...plus the people who use and maintain them.

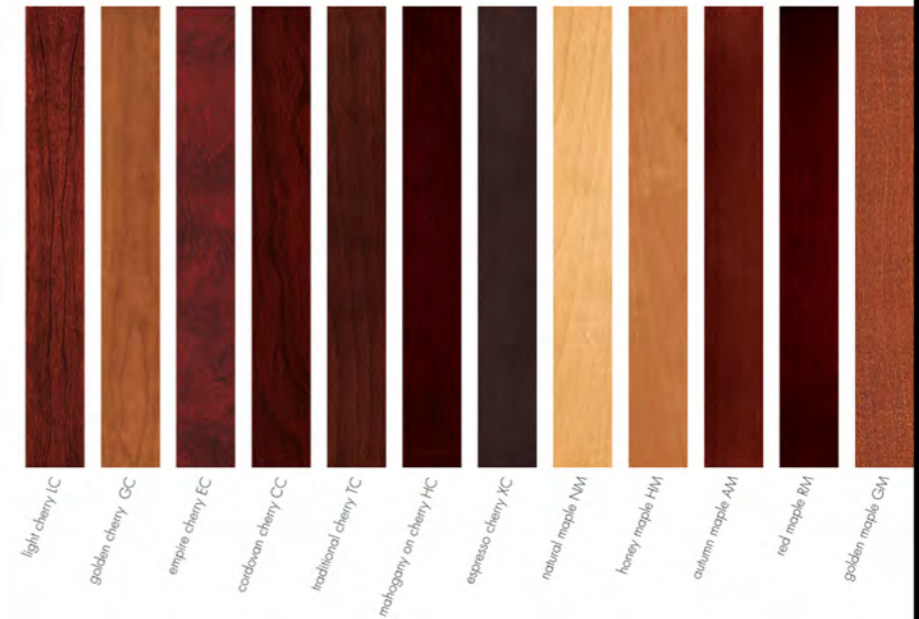
From Paoli. Fine craftsmanship and excellent customer service.

Fuse design concept by Dan Grabowski with Paoli R & D.



F U S E

F
U
S
E



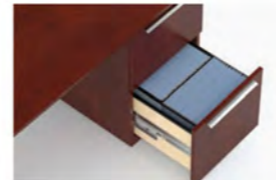
STRONG, STURDY, SUBSTANTIAL



Full-extension metal ball-bearing suspensions are featured on all Fuse drawers – center, box and file – to offer accessibility, strength and ease of use.



Wood drawers are sanded smooth and finished to a satin sheen. Dovetailed joinery is testament to PaoLi's legacy of craftsmanship and durability.



File drawers can be organized for front-to-back letter filing, or side-to-side legal filing.



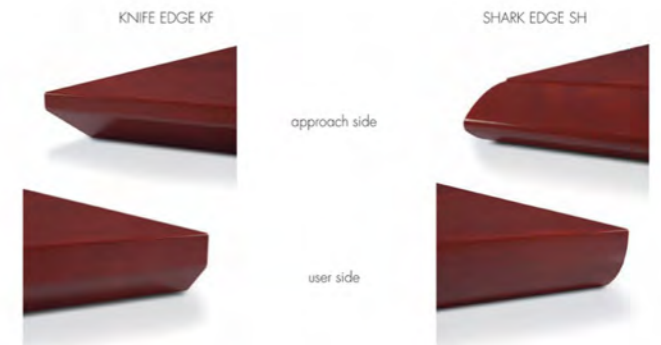
Center drawers are available in three widths. Wood pencil trays are included.



Furniture-mounted task lights for Fuse Standard, Taller or Enhanced Upper Bookcases come in two models, fluorescent or LED.



PaoLi's exclusive Tech-Age finish amplifies the natural beauty of wood and gives lasting protection.



These printed samples are intended as finish color representations. Actual samples should be used for wood finish color matching and sheen.



COVER: Cordovan Cherry
ABOVE: Espresso Cherry

COVER/ABOVE: Fuse L-unit shown with Knife edge and Chamfer pulls in Matte Chrome. Tackboard in Quad "Ratio".

Omega Executive Synchro Chair in Francesca Wool II "Baltic" upholstery and "Graphite" mesh.



Fuse merges the inviting ambience of wood and an inventively detailed furniture concept.



Fuse U-unit shown in Honey Maple with Shark edge and Shark pulls in Matte Black. Tackboard in Jay "Solar".

Maxim Executive Tilt Swivel in Blossom "Amber" upholstery.



Fuse coordinates with the private office's evolving size and shape through flexible components in an assortment of dimensions.



Fuse Desk and Credenza shown in Light Cherry with Shark edge and Shark pull in Matte Chrome. Tackboard in Hue "Frothe".

Omage Executive Synchro Chair in Catalina "Taupe" leather and "Platinum" mesh and Miraval Guest Chairs in Beat Box "Beach" upholstery.



Fuse lends its distinctive aesthetics and functional advantages to designs for conference and meeting rooms.



Fuse Conference Room shown in Light Cherry with Knife edge and Chamfer pulls in Matte Chrome.

Omaga Executive Tilt Swivel Chair in Nikko "Sweet Pea" and "Graphite" mesh.



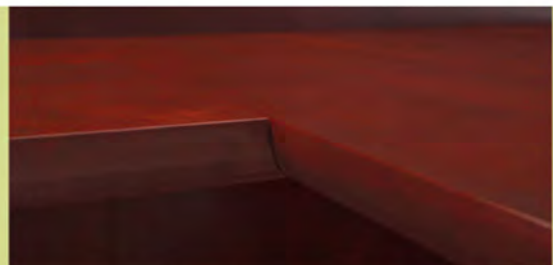
With up to 98% wall access via Pivoting Modesty Panels,
Fuse provides easy power, data and voice connections.



Fuse Conference L-units shown in Natural Maple with Shark edge and Shark pulls in Matte Black. Tackboard shown in Era "Char".

Maxim Management Tilt Swivel Chairs in Morphe "Moss" upholstery and Caraway Guest Chair in Catalina "Black" leather.

A D A P T A B L E



A nearly seamless fit exists where bridges and returns join desktops, a mark of fine wood craftsmanship.



Fuse L-unit from the facing page with variations in components and details:
 a. Wood Doors and Matte Chrome pulls. b. Open Shelves and Matte Black pulls.
 c. Rectangular Desktop, Hanging Cabinet with Aluma Doors, Tackboards and Knife edge.
 d. Rectangular Desktop, Hanging Cabinet with Wood Doors, Tackboards, Matte Black pulls and Knife edge.



Approaches to storage in smaller workspaces benefit from the variety of choices Fuse provides in furniture-mounted or wall-mounted designs.



Fuse L-unit shown in Light Cherry with Shark edge and Rod pulls in Matte Chrome. Tackboard in Pictogram "Tonic".

Maxim High Back Task Chair in Bravo "Hematite" upholstery and Ripley Guest Chairs in Pictogram "Tonic" upholstery.



Fuse multiplies the number of orderly, uncluttered U-unit configurations through clean-lined, floating-top looks and abundant storage options that individualize workspaces.



Fuse U-unit shown in Honey Maple with Knife edge and Chamfer pulls in Matte Black. Tackboards in Gig "Cafe".

Slingshot Executive Tilt Swivel Chair in Zip "Mink" upholstery and "Black" mesh and Vogue Club Chair in Zip "Mink" upholstery.



Fuse U-unit shown above with variations in components and details:
 a. Wood Doors in all positions.
 b. Aluma Doors in all positions and Matte Chrome pulls.
 c. Box/Box/File-Right Pedestal, 72" Taller Hanging Cabinet with Open Shelves and 30" Taller Hanging Cabinet with Wood Doors.
 d. Pivoting Modesty Panel-Acrylic, Box/Box/File-Right Pedestal, 30" Taller Storage Upper Bookcase, 72" Taller Hanging Cabinet with Aluma Doors and Matte Chrome pulls.





Fuse Conference L-unit shown in Cordovan Cherry with Knife edge and Shark pulls in Matte Chrome. Tackboards in Jay "Echo".

Omage Mid Back Tilt Swivel Chair in Bravo "Sagebrush" upholstery and "Graphite" mesh and Artisan Guest Chairs in Bravo "Sagebrush" upholstery.



Fuse Conference L-unit shown in Cordovan Cherry with Knife edge and Chamfer pulls in Matte Chrome. Tackboards in Jay "Echo".

Maxim Management Tilt Swivel Chair in Cashmere "Yacht" upholstery.



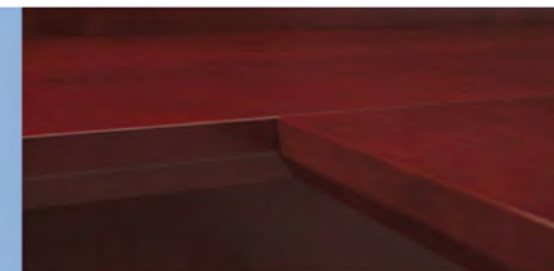
Assorted upper storage choices, in various heights, widths and facades, give Fuse a signature difference in efficient solutions for maximizing vertical space.



Fuse Conference L-unit shown in Cordovan Cherry with Knife edge and Shark pulls in Matte Black. Tackboard in Jay "Echo".

Slingshot Executive Synchro Tilt Chair in Davenport "Celadon" leather and "Black" mesh.

DISTINCTIVE



Adjoin a conference extension at any point along a credenza's profiled edge and obtain a seamless fit worthy of millwork.



REMARKABLE

The effect of the Technology Top's sweeping geometry recognizes user preferences for corner placement of computers.



Re-examined desktop shapes and component sizes answer the changes in computers and the needs users have for connecting devices to them for synching data or recharging.

Fuse Unit shown in Golden Maple with Shark edge and Shark pulls in Matte Chrome. Tackboard in Rendezvous "Pepper".

Omage Executive Tilt Chair with Headrest in Davenport "Storm" leather and "Graphite" mesh and Milano Guest Chair in Rendezvous "Pepper" upholstery.



ACCOMPLISHED



Double pedestal desks provide convenient, approach-side access to concealed spaces for power/data access and cable routing.



Fuse offers a wealth of advanced features and refined appearances to empower offices as private domains of individual efficiency and team productivity.



Fuse Desk and Credenza shown in Mahogany on Cherry with Shark edge and Rod pulls in Matte Chrome. Tackboard in Treat "Lichen".

Omage Executive Tilt Chair with Headrest in Bravo "Alfalfa" upholstery and "Platinum" mesh.

ACCESSIBILITY



Fuse wire management capabilities are integrated into each component.

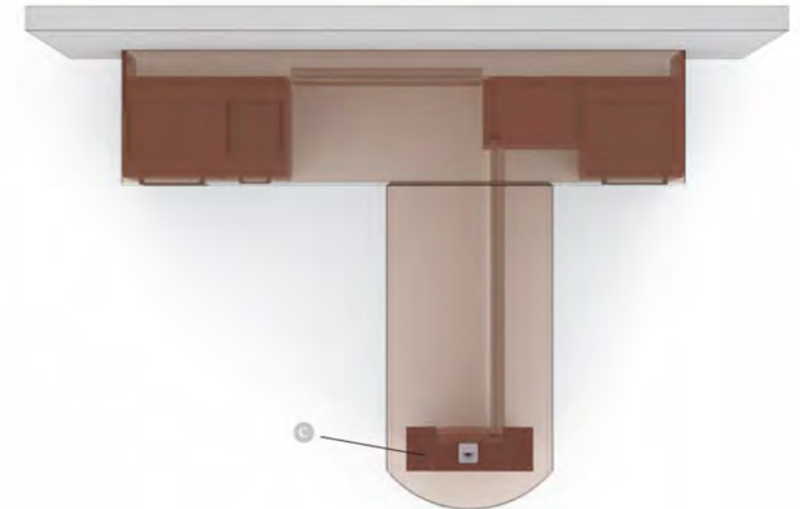
For this reason there's nothing extra to learn, nothing different to specify and nothing separate to keep on hand.



When Fuse sits away from walls in open space, Enhanced Wing End Supports (b) upgrade both appearance and functionality. Designed to not only look better when seen from any angle, the Enhanced Wing End Supports offer entry points for cords and cables connecting to floor monuments. A concealed interior compartment provides for routing these cables through the furniture, and for hiding routers, modems or other equipment. The Pivoting Modesty Panel offers wall outlet access.



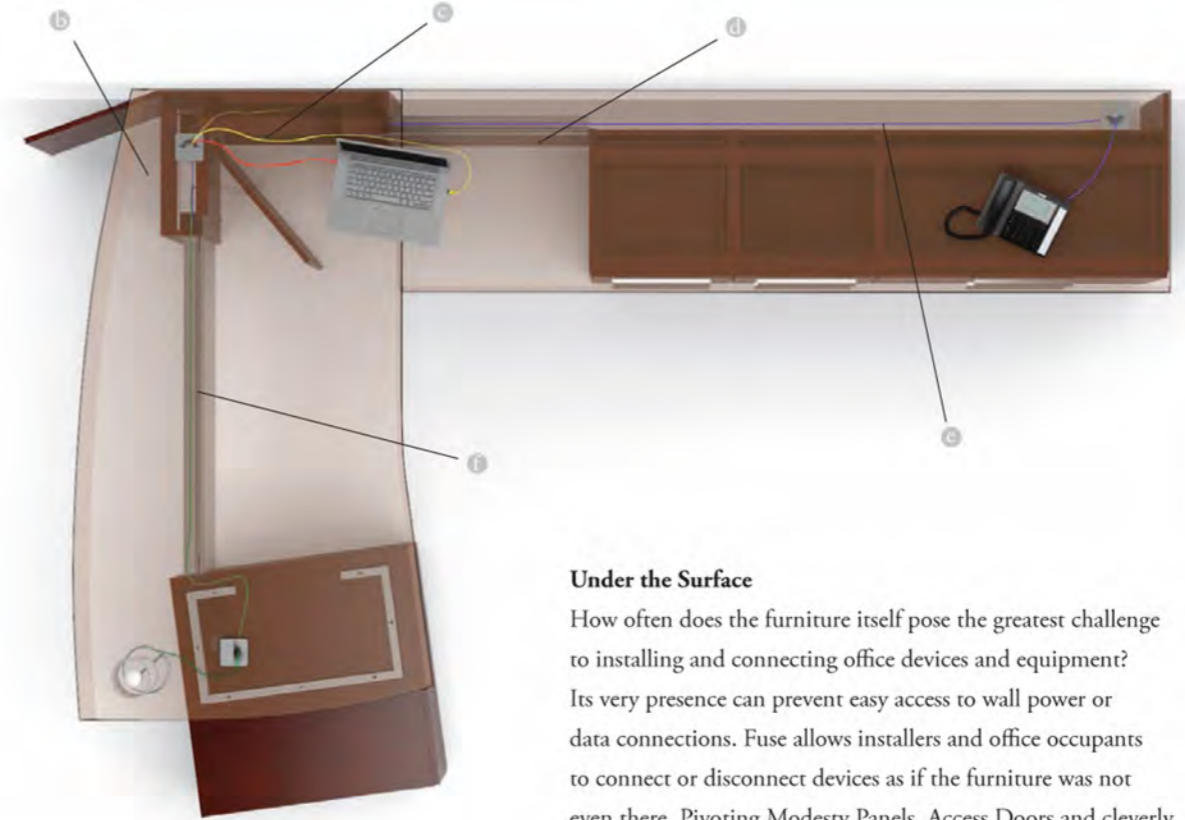
Even sitting flush to the walls, 98% of the wall space behind this U-unit is accessible. Viewed from overhead, the cabling space (b) behind the pedestals and modesty panels keeps wall outlets within easy reach. This reduces the time and effort for routing cables, connecting devices or servicing equipment.



This Conference Lunit provides 98% wall access and highlights the capabilities of the Enhanced Conference Base. (c) These include an entry point for cords and cables connecting to floor monuments and interior space for looping cables or installing distribution equipment. The Pivoting Modesty Panel offers wall outlet access.



■■■■
 In Fuse, a determined effort has been made to give facilities managers and IT specialists a head start on a future full of equipment upgrades, employee moves and changing technology. The ability to adapt to these inevitable changes in the years to come supports the purpose-filled design approach to Fuse.

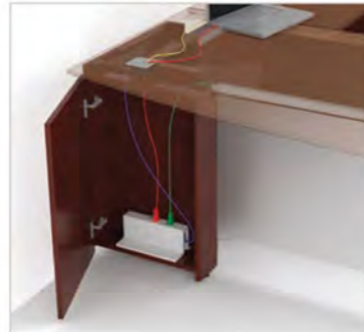


Under the Surface

How often does the furniture itself pose the greatest challenge to installing and connecting office devices and equipment? Its very presence can prevent easy access to wall power or data connections. Fuse allows installers and office occupants to connect or disconnect devices as if the furniture was not even there. Pivoting Modesty Panels, Access Doors and cleverly designed Back Panels are incorporated into the Fuse design for returns, credenzas and modular components. These features make it possible for up to 98% of the wall behind the furniture to be accessible for connections, servicing and cable routing.



1 Upper Bookcase Solutions
 The Enhanced Tackboard, which stands off 4 inches creates a cable routing space. Cables, including power cords from task lighting, have a concealed path to worksurface grommets and to their connection points.



2 Visitor Power and Data Access
 Connections for going online, network access or recharging devices is as easy for visitors as for office occupants. Doors built into Enhanced Wing End Supports and Double Pedestal Desks open for visitors to make connections with building power and data hookups.



3 Enhanced Capabilities
 Interior compartments, concealed behind doors or panels, are integrated into the Fuse component selection. The Enhanced components provide spaces for looping cables or hiding distribution equipment such as routers and modems.



4 Pivoting Modesty Panels
 Surfaced in veneer on both sides or in frosted acrylic, these modesty panels are offered in multiple widths. Pivoting Modesty Panels are suspended by a unique bracket and are offered for desks, bridges, returns, credenzas and conference extensions.



5 Access Behind Pedestals
 Fuse single pedestal desks, bridges, returns and credenzas are designed with an obstruction-free space that spans the width of the unit and from floor to beneath the worksurface. This 4.5" deep space provides room to work when routing cables and keeps them concealed when everything is set and ready for use.



6 Routing Wires Through Kneespaces
 A concealed channel incorporated into the Pivoting Modesty Panel support bracket carries wires horizontally across the kneespaces of desks, bridges, returns, credenzas and conference extensions. This can be useful for telephones, lamps or other devices positioned opposite from the entry point for power or data.

STORAGE OFFERING

Bookcases and Lateral Files

- 30" or 36" wide
- Two, three or four drawer files
- Two, three or four shelves



Personal Cabinets and Wardrobes

- 72" high, 18" wide
- Left or right hinged doors
- Profiled cabinet tops available



Video Cabinets and Wardrobes

- 72" high, 30 or 36" wide
- Profiled cabinet tops available



Upper Bookcases

- 72" high overall, 11 widths
- Furniture mounted
- Profiled cabinet tops available



Hanging Cabinets

- 72" high overall, 9 widths
- Wall mounted
- Profiled cabinet tops available



Taller Hanging Cabinets

- 84" high overall, 9 widths
- Wall mounted
- Profiled cabinet tops available



Taller Upper Bookcases

- 84" high overall, 11 widths
- Furniture mounted
- Profiled cabinet tops available



Taller Personal Cabinets and Wardrobes

- 84" high overall, 18" wide
- Left or right hinged doors
- Profiled cabinet tops available



Taller Video Cabinets and Wardrobes

- 84" high overall, 30" or 36" wide
- Profiled cabinet tops available



ENHANCED STORAGE

Enhanced Upper Bookcases

- 84" high overall, 3 widths
- Furniture mounted
- Upgraded end panels



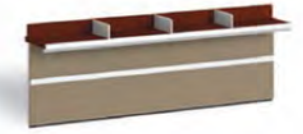
Enhanced Side Cabinets

- 84" high overall, 7 widths
- Furniture mounted
- Left or right, with upgraded end panel



Enhanced Tackboard with Toolbar

- Routes wires and cords to grommets in tops
- Includes Toolbar, accessories ordered separately



Shown with Floating Shelf
• For 54", 66" and 72" wide upper bookcases

ACCESSORIES



UNDERSURFACE PEDESTALS

Pedestals, Storage Cabinets and Personal Pedestals are built for installation in specific positions – left, center, or right – determined from where the user sits.



Three Pedestals

- Left – File/File pedestal
- Center – Box/Box/File pedestal
- Right – Box/Box/File pedestal



Lateral File and Pedestal

- Left – Lateral File
- Right – Box/Box/File Pedestal



Storage Cabinets and Pedestal

- Left – Box/Box/File Pedestal
- Center – Open Storage Cabinet
- Right – Storage Cabinet with Door



Personal Pedestal

- Personal Pedestal/Left under a Desktop

EDGES AND CONNECTIONS



SHARK



KNIFE



UNIVERSAL

Specially designed edges create precise, nearly seamless fits for Fuse arrangements. Edges are veneer over hardwood for continuous tone and grain appearance.

Ends of Fuse surfaces receive a wood self-edge.

See Fuse pricing for complete specification and ordering information.

FUSE POSSIBILITIES



Modular Executive Desk, 108" Credenza and Enhanced Upper Bookcase



84" Executive Desk, 108" Credenza and Enhanced Upper Bookcase



U-unit with Taller Hanging Cabinets



U-unit with Technology Credenza Top and Upper Bookcase with Cabinet Top



60" Arc End Conference Extension and 102" Credenza



66" Wing Conference Extension and 108" Credenza



72" Single Pedestal Desk and 66" Return



Modular Single Pedestal Desk and 96" Return

All shown in Light Cherry.



72" Table Desk, 72" Credenza and Enhanced Upper Bookcase



U-unit with Technology Desk Top and Enhanced Upper Bookcase



60" Arc End Conference Extension and 108" Credenza



72" Cantled Desktop and 66" Return

All shown in Light Cherry.